

Acute Otitis Media (AOM) Pretest

Dr. Caroline Paul

1) Describe the position of the tympanic membrane in this image.



2) Pick the term that best describes this image.

- a. Fully opaque
- b. Semi-opaque
- c. Neutral
- d. Translucent



3) Pick the term that best describes this image.

- a. Bulging
- b. Fully opaque
- c. Semi-opaque
- d. Translucent



4) Pick the term that best describes this image.

- a. Amber
- b. Bulging
- c. Fully opaque
- d. Semi-opaque
- e. Translucent



5) Pick the term that best describes this image.

- a. Air-fluid level
- b. Bulging TM
- c. Cobblestoning
- d. Retracted



6) Pick the term that best describes this image.

- a. Air-fluid level
- b. Bulging TM
- c. Cobblestoning
- d. Retracted



7) Describe what the arrow points to?



8) What condition is the finding most associated with in children?



9) Describe the term that best describes the following image.

- a. Amber
- b. Grey
- c. Red
- d. White
- e. Yellow



10) Describe the term that best describes the following image.

- a. Amber
- b. Grey
- c. Red
- d. White
- e. Yellow



11) Pick the term that best describes the image.

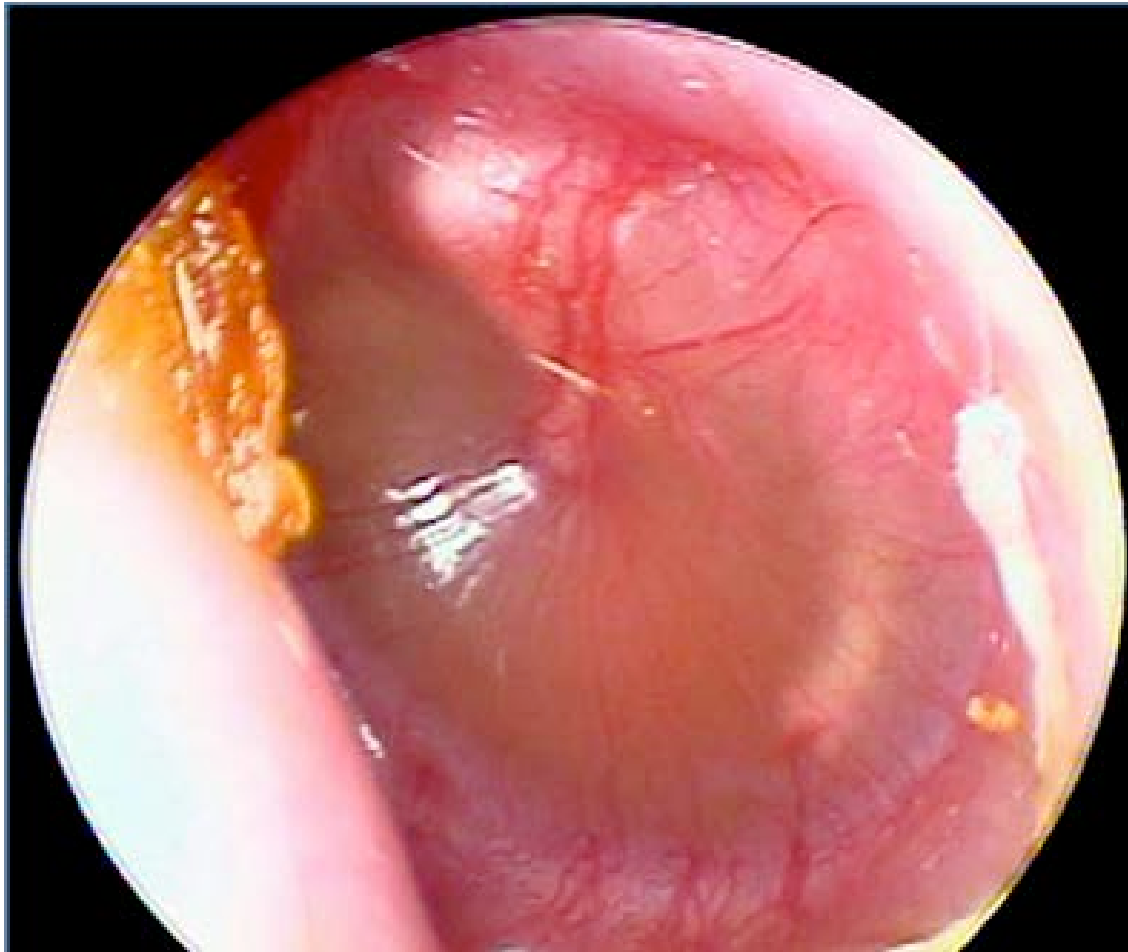
- a. Air-fluid levels
- b. Bulging
- c. Normal
- d. Opaque
- e. Semi-opaque



- 12) What is the arrow pointing to?
- a. Cone of light
 - b. Long head of malleus
 - c. Short head of malleus
 - d. Umbo



- 13) Pick the clinical condition that best correlates with this image.
- a. Acute otitis media with effusion
 - b. Bullae myringitis
 - c. Normal ear
 - d. Otitis media with effusion

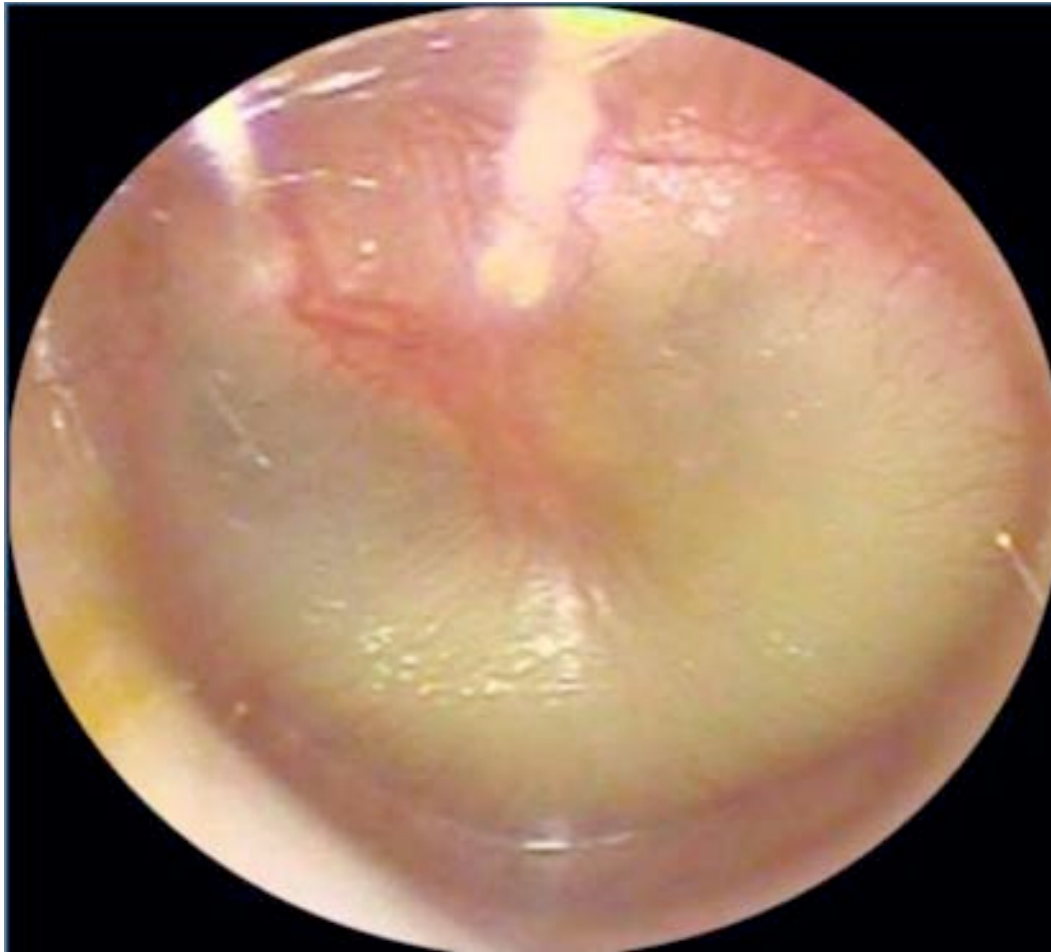


- 14) Pick the clinical condition that best correlates with this image.
- a. Acute otitis media with effusion
 - b. Bullae myringitis
 - c. Normal ear
 - d. Otitis media with effusion



15) Pick the color that best describes the following tympanic membrane.

- a. Amber
- b. Blue
- c. Red
- d. White
- e. Yellow



16) Pick the color that best describes the following tympanic membrane.

- a. Amber
- b. Blue
- c. Gray
- d. Red
- e. White
- f. Yellow



17) The most specific otoscopic sign of AOM is

- a. Marked erythema of the TM
- b. Decreased mobility of the TM
- c. Bulging of the TM
- d. Opacification of the TM

18) The most specific symptom of AOM is:

- a. Ear Pain
- b. Rhinorrhea
- c. Decreased appetite
- d. Fever

19) All of the following colors are commonly associated with AOM except

- a. Red
- b. Amber
- c. Pale yellow
- d. White

20) What is the prevalence of marked erythema in children with AOM?

- a. 10%
- b. 20%
- c. 50%
- d. 80%

21) A semi-opaque TM is only associated with AOM.

- a. True
- b. False

22) Mild inflammation can be seen in otitis media with effusion (OME)

- a. True
- b. False

23) Which speculae size would you use for a 3 year old for an ear exam?

24) List two potential sequelae from a suboptimal ear exam?
